

CORRELATOR3D™ QUICKSTART GUIDE

OVERVIEW

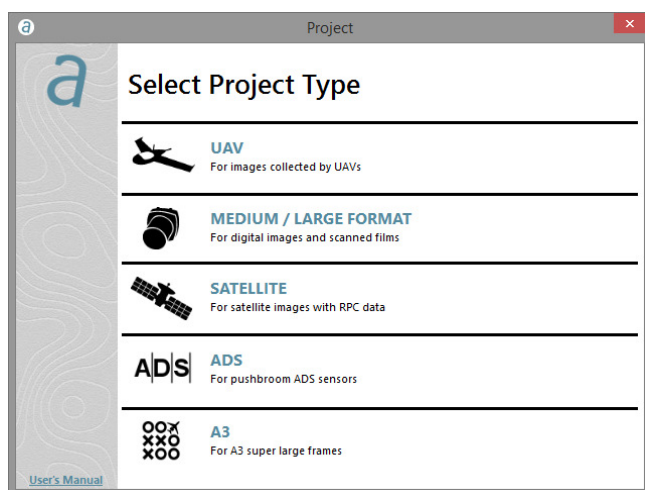
SimActive's Correlator3D™ software is a photogrammetry solution for the generation of high-quality geospatial data from satellite and aerial imagery, including UAVs. Powered by GPU technology and multi-core CPUs, Correlator3D™ ensures matchless processing power to support rapid production of large datasets.

Correlator3D™ performs aerial triangulation (AT) and generates the following outputs:

- Digital surface models (DSM)
- Digital terrain models (DTM)
- Point clouds
- Orthomosaics
- Vectorized 3D features

This guide is designed for first-time users and covers a standard workflow from input imagery to final products. A more detailed description of the software can be found in the user's manual.

PROJECT CREATION



To assist in the creation of a new project, the software features a wizard to easily specify inputs. The user is first requested to select the type of data to be processed. Follow-up steps include specifying input images, camera and orientation parameters, as well as the projection.

USER INTERFACE

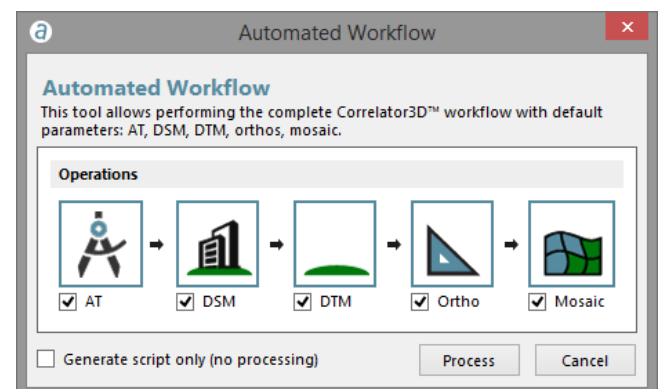
The main toolbar provides access to the different modules of Correlator3D™. Each module has its own specific toolbar, displayed vertically on the right side of the main window when active. Once processing is completed within a given module, results can be viewed by selecting an element from the project tree on the left side of the main window.

The main toolbar provides a direct access to Correlator3D™ modules, in the exact order of a standard workflow. From left to right, they represent the following operations:



- Create a project
- Open a project
- Automated workflow
- Aerial triangulation
- DSM creation
- DTM extraction
- DEM editing
- Orthorectification
- Mosaic creation
- Mosaic editing
- Feature extraction

AUTOMATED WORKFLOW



Once a project is created, the automated workflow can be used to automatically process the data with default parameters. Alternatively, users can perform all processing steps through the sequential use of individual modules. The latter approach is recommended for more experienced users and to achieve optimal results.

Once a data type is selected, the project creation wizard consists of the following three steps.

STEP 1: IMAGE SELECTION

- The images to be processed must first be selected.
- If the image files do not include exterior orientation data (EXIF), a text file must be imported.
- A projection system must be specified.

STEP 2: CAMERA PARAMETERS

- In most cases, the camera parameters will be automatically determined by the software.
- Values for the focal length, principal point, pixel size and distortion can also be manually set.

STEP 3: PROJECT PARAMETERS

- The project location on the PC must be specified.
- Optionally, a ground control point (GCP) file can be created or referenced orthophotos can be imported. A seed DEM can also be loaded, mostly for satellite and large-format aerial projects.

AERIAL TRIANGULATION

AT is the most critical step of a photogrammetry project. It allows calibrating the camera and refining exterior orientation parameters. The quality of the subsequent DSM, DTM, point clouds and orthomosaics depends on the accuracy of AT results.

The AT toolbar contains direct access to all AT steps, which should be performed in the following sequential order.



Allows creating GCPs, which ensures absolute accuracy of the final results (optional).



Automatically extracts tie points between the images.



Provide manual tie point creation for the user (optional).



Performs bundle adjustment to calibrate the camera and adjust the exterior orientation of each image.



Filters AT results by removing images with a tie point residual higher than a specified threshold (optional).



Generates a coarse DEM, which is used as an input for DSM generation. This is a necessary step for UAV projects.

Bundle adjustment results should give an average tie point residual error smaller than 1 pixel. Higher residuals lead to inaccurate subsequent results. Note that a single bundle adjustment step should be sufficient to achieve optimal output. As such, performing additional steps will generally deteriorate accuracy. Unsatisfactory AT results can be due to many factors, but are often explained by an incorrect project setup.



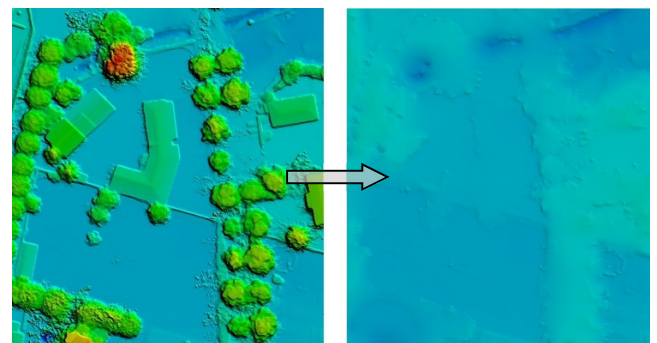
DSM GENERATION



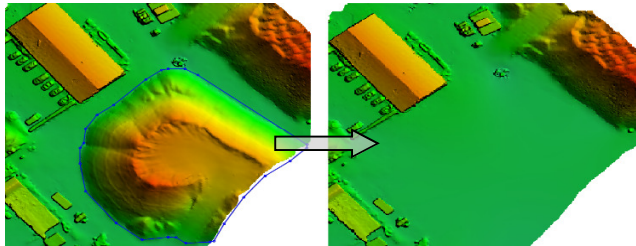
Once AT is done, a DSM can be generated at the output resolution specified by the user. During this process, overlapping regions between successive images are used as stereo data to derive elevation information. If required, a point cloud can also be produced in parallel during the same process.



DTM EXTRACTION

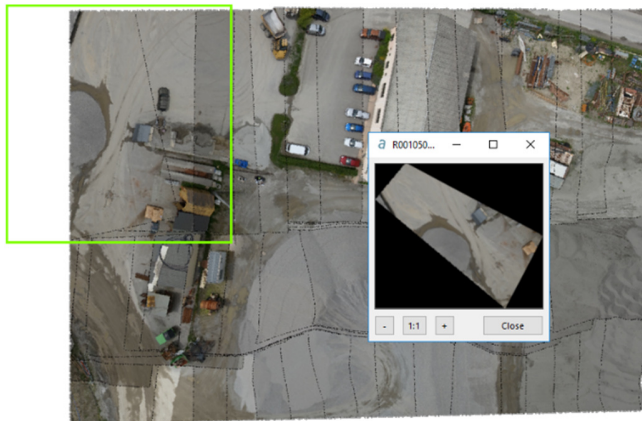


Through automatic filtering of the DSM, a DTM can then be extracted. The software analyzes the DSM and removes structures lying on the ground. DTMs are useful for generating orthophotos as they avoid visual artifacts (e.g. along building edges) caused by using DSMs.



While automatically generated DSMs/DTMs are highly accurate, users may still desire to alter them for specific project requirements. The DEM editing module allows selecting a polygonal selection and performing operations such as crop/delete, set/offset elevation values and filter regions. A "Delete and Fill" function is also available for quick removal of structures.

ORTHORECTIFICATION



Before an orthomosaic can be generated, individual orthophotos must be created. Orthorectification consists of geometrically correcting the raw images such that they provide an accurate representation of the ground surface. The photos are thus adjusted for topographic relief, lens distortion and camera orientation. Once all orthophotos have been produced, they can be visualized through the software interface.

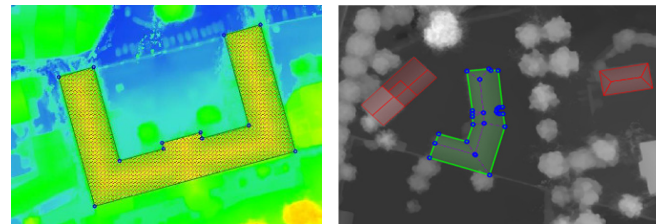
MOSAIC CREATION

Mosaic creation allows the merging of individual orthophotos to obtain a unique image covering the entire project area. The software automatically selects which portion of which image must be included in the final mosaic. Hence, seamline generation and color balancing are performed to provide smooth and seamless transition between adjacent images composing the mosaic.



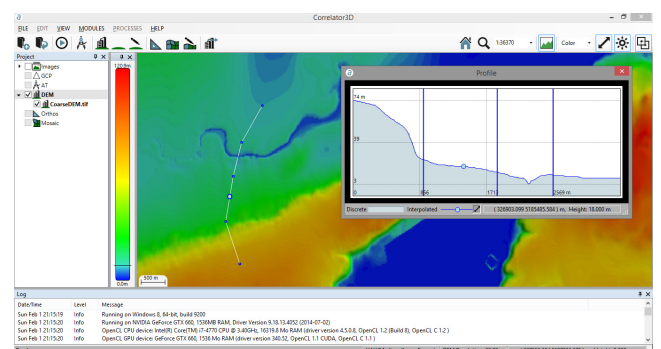
Automatically generated mosaics can be interactively adjusted. The mosaic editing module allows modifying seamlines with real-time visual feedback on the effect of changes. It can also be used for tuning the global mosaic colors and to enhance its appearance. Once editing is completed, the mosaic can be exported following a tiling scheme defined by the user.

FEATURE EXTRACTION



The feature extraction module enables to generate 3D features from a DSM by creating 3D polygons. It consists of a semi-automatic tool that can use photogrammetric / LiDAR DSMs and extract objects such as buildings, roads, waterbodies and forests.

ADDITIONAL TOOLS



Correlator3D™ also features additional tools, which allow the following:

- Point cloud colorization
- NDVI map creation
- Volume calculation
- 3D profile